

CORESense/TrueShip Integration

Setting up ODBC access to CORESense



Purpose

CORESense Shipment Manager can be configured to export shipments to a specified table, accessible to TrueShip via ODBC. This allows users to access shipment information directly from TrueShip, in order to complete the shipping process.

ODBC Setup

Note: Your Coresense consultant must arrange for limited access to the Coresense database. You will be provided with a host URL, database name, username, and password.

Users must first obtain the MySQL connector which will allow for the ODBC connection with the Coresense Server. Navigate to the following link: <http://dev.mysql.com/downloads/connector/odbc/3.51.html#win32>

Select the Windows MSI Installer (by clicking on “Download” to the right). You will then be asked to sign in or log in as a new user. Logging in only takes a few seconds and allows you to download the connector.

The screenshot shows the MySQL Connector/ODBC 3.51.29 download page. It features a 'Select Platform' dropdown menu set to 'Microsoft Windows'. Below the menu is a table with two rows of download options. The first row is for 'Windows (x86, 32-bit), MSI Installer Connector-ODBC' with a size of 2.1M and a 'Download' button. The second row is for 'Windows (x86, 64-bit), MSI Installer Connector-ODBC' with a size of 7.3M and a 'Download' button. Both rows include MD5 hashes and links to 'Signature' files.

Platform	Version	Size	Action
Windows (x86, 32-bit), MSI Installer Connector-ODBC (mysql-connector-odbc-3.51.29-win32.msi)	3.51.29	2.1M	Download
Windows (x86, 64-bit), MSI Installer Connector-ODBC (mysql-connector-odbc-3.51.29-winx64.msi)	3.51.29	7.3M	Download

Select a “Mirror” site that is close to you by clicking the “HTTP” link beside the site.

You are downloading:

`mysql-connector-odbc-3.51.29-win32.msi`

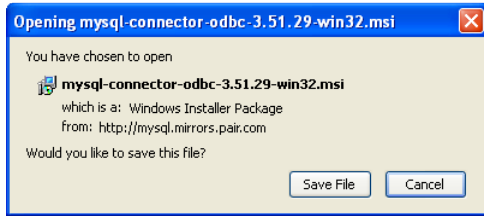
To make this download faster, please choose a mirror site close to you from the list below.

Mirrors in: *United States*

We have looked up your IP address using [MaxMind GeoIP](#), and believe that these mirrors may be closest to you. A complete list of mirrors by continent is below.

- pair Networks / Pittsburgh, PA [HTTP](#)
- Hurricane Electric / San Jose, CA [HTTP](#)
- Hoobly Classifieds / Chicago, IL [HTTP](#)

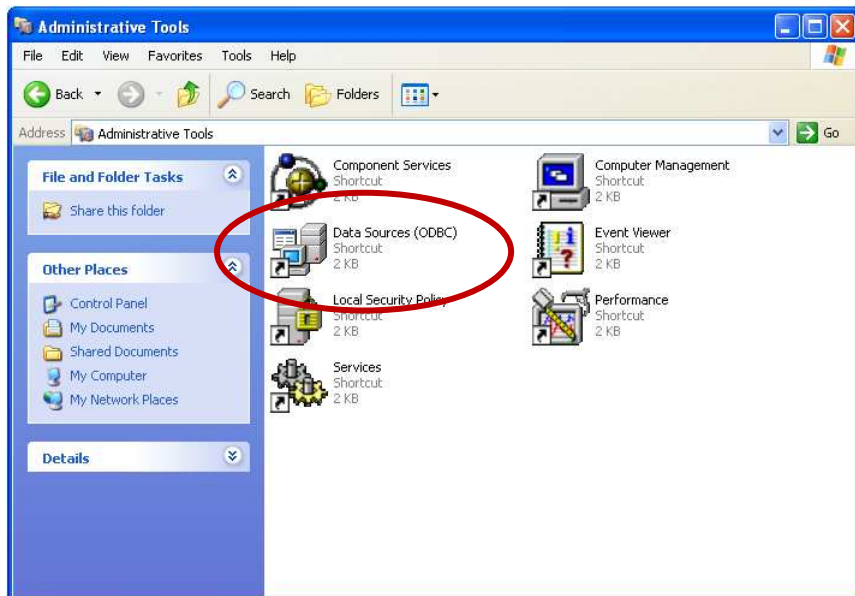
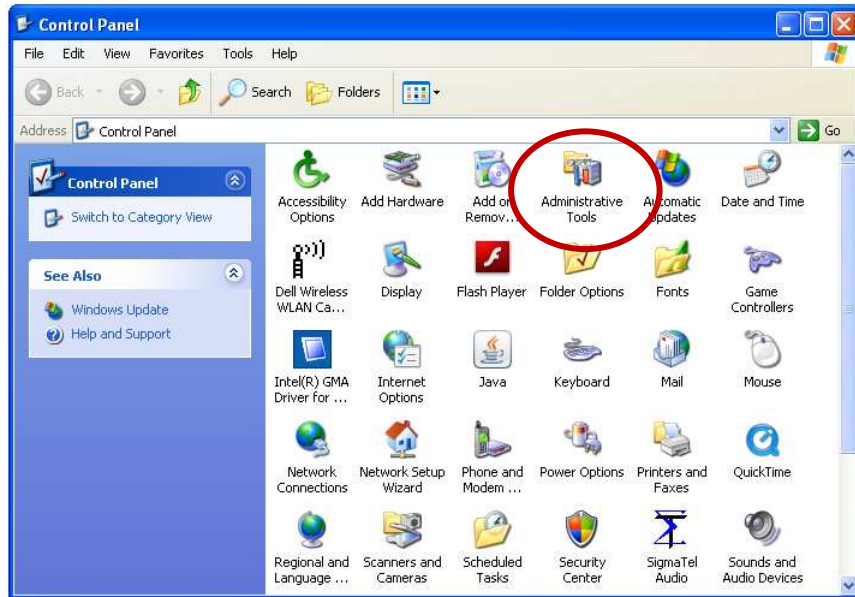
Download and install the Connector on the machine(s) running TrueShip



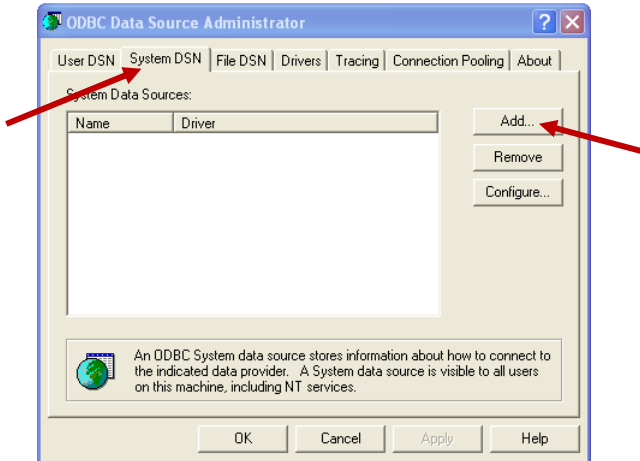
ODBC Set-up

Navigate to the start menu on your computer.

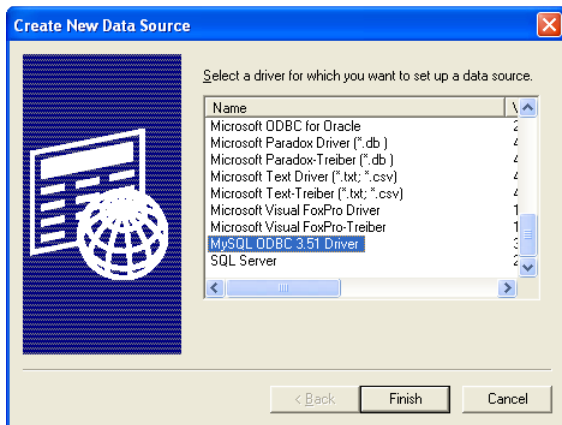
Select Control Panel > Administrative Tools >Data Sources (ODBC)



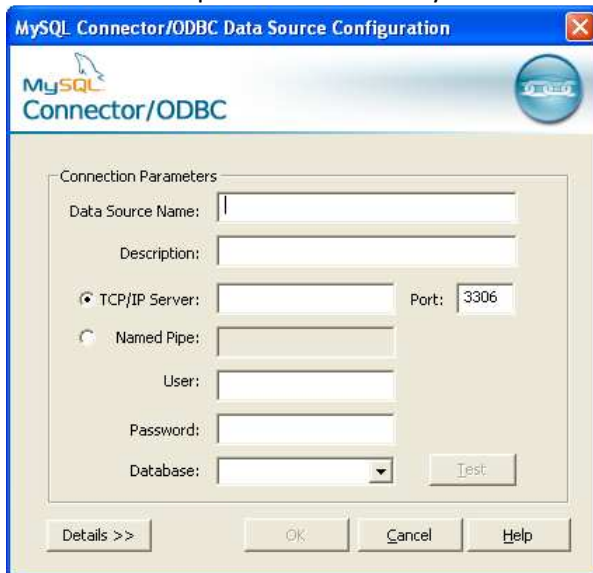
In the window “ODBC Data Source Administrator” select tab “System DSN” and select “Add” button



In the window “Create New Data Source” select MySQL ODBC 3.51 Driver (Example below)



You will now be presented with a MySQL Connector/ODBC window. (See Example)



Enter the following:

Data Source Name: Coresense TrueShip

Description: Leave blank

Server: Enter the URL provided to you

User: Enter the Username provided to you

Password: Enter the password provided to you

Database: Enter the database provided to you

When complete select "Test" and the following message should appear:

